


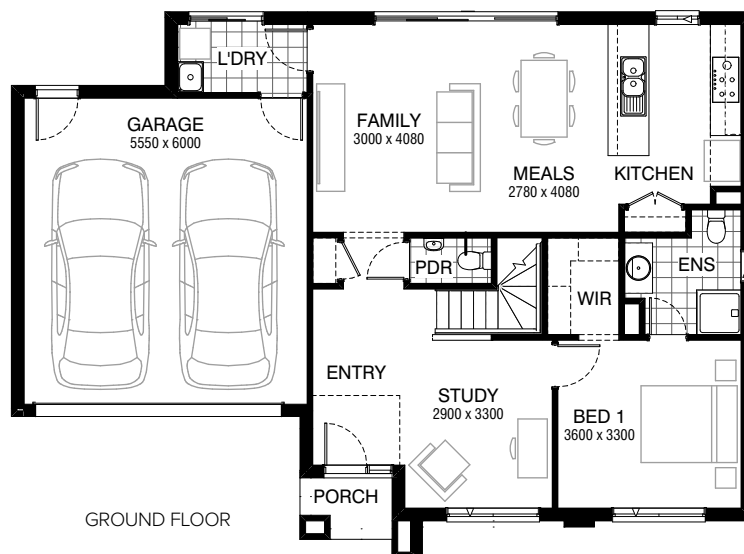
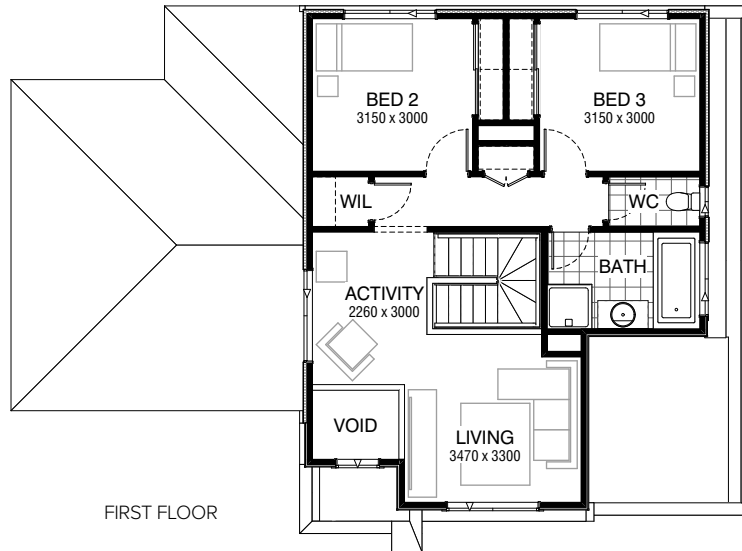


Total squares **21.0sq**

 **3**  **2.5**  **2**



FLOORPLAN OPTIONS

All available ready-to-go floorplan options for this design can be viewed on the following pages, or visit www.burbank.com.au.

Facades available:

Condor, Matisse, Monet

Overall home width 14.51m

Overall home length 10.67m

Residence 156.3m² 16.8sq

Garage 36.8m² 4.0sq

Porch 2.2m² 0.2sq




Total 195.3m² 21.0sq

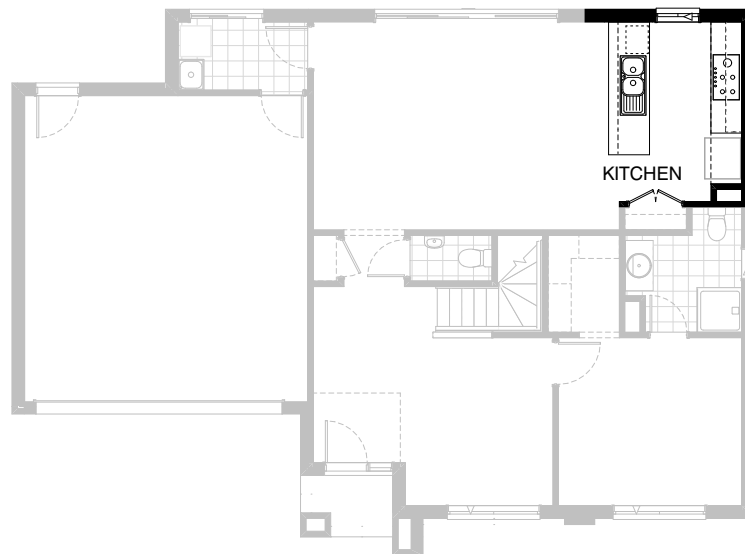
Listed details based on Condor façade floorplan (illustrated)

*Copyright conditions. All photos and illustrations are representative only. Floor plans and specifications may be varied by Burbank without notice, the dimensions are diagrammatic only and a Building Contract with final drawings will display correct dimensions and detail. All designs are the property of Burbank and must not be used, reproduced, copied or varied, wholly or in part without written permission from an authorised Burbank representative. Copyright Burbank Australia Pty Ltd. ABN 91 007 099 872. Builders Registration Number CDB-U-52603.

Call 13 BURBANK
Visit burbank.com.au

FLOORPLAN OPTIONS




 **3**  **2.5**  **2**

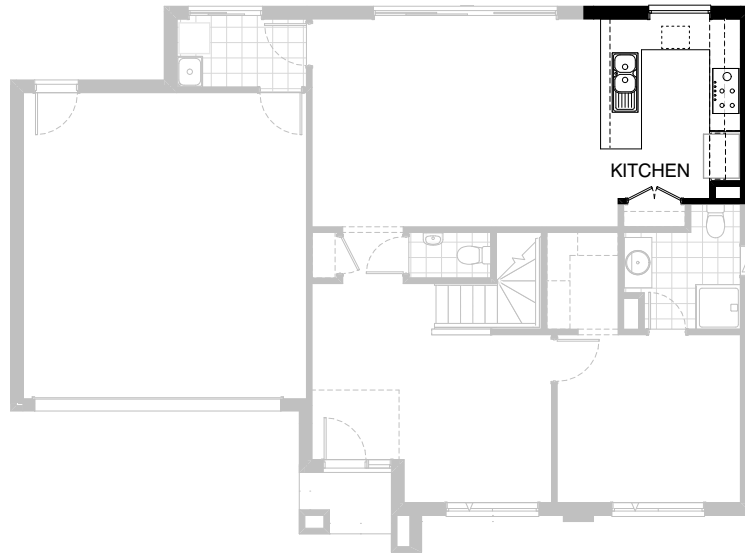


Option K-1

Provide 632mm wide base cupboard with MW. provision and pot drawer under to Kitchen island bench in lieu of 600mm base cabinet

FLOORPLAN OPTIONS


 **3**  **2.5**  **2**

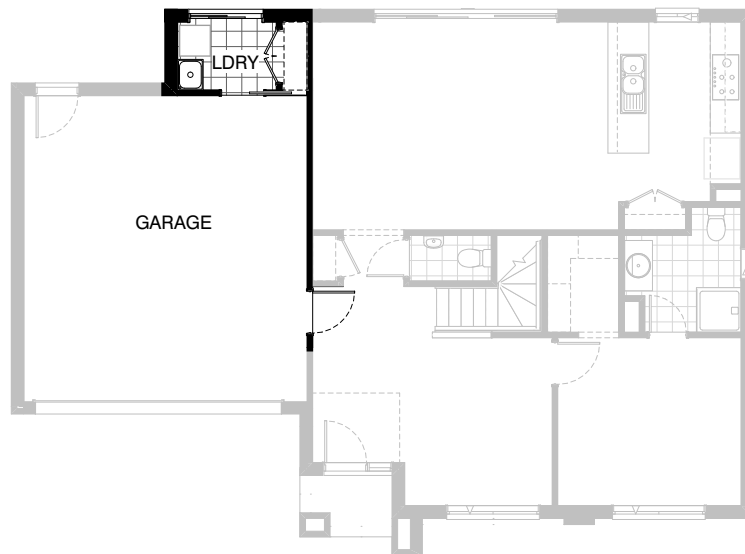


Option K-2

Provide U shaped Kitchen Option including 300mm deep by 600mm wide plaster lined bulkhead above overhead cabinets, 900mm appliances, retractable rangehood, 1no. 850mm corner base cabinet, MW. provision with pot drawer below, 1no. 450mm base cabinet, 1no. 900mm corner base cabinet, 1no. 300mm base cabinet, 1no. 800mm base cabinet, 1no. DW. provision, 1no. 4 drawer bank, 900mm laminated shelf above fridge space including 16mm laminated end panel, 2no.900mm overhead cabinets and 1no. 300mm overhead cabinet including additional bench top and tiled splashback to suit. Provide 1200mm by 1210mm aluminium fixed window with no bottom reveal to Kitchen in lieu of standard window.

FLOORPLAN OPTIONS



 **3**  **2.5**  **2**

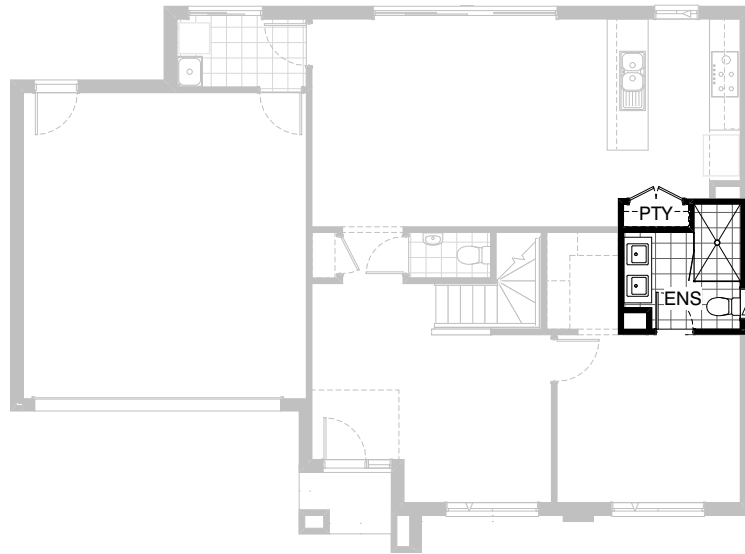


Option LD-1

Provide Linen cupboard to Laundry with cavity sliding door from Garage in lieu of hinged door off Family. Provide hinged access door to Garage off Entry

FLOORPLAN OPTIONS



 **3**  **2.5**  **2**

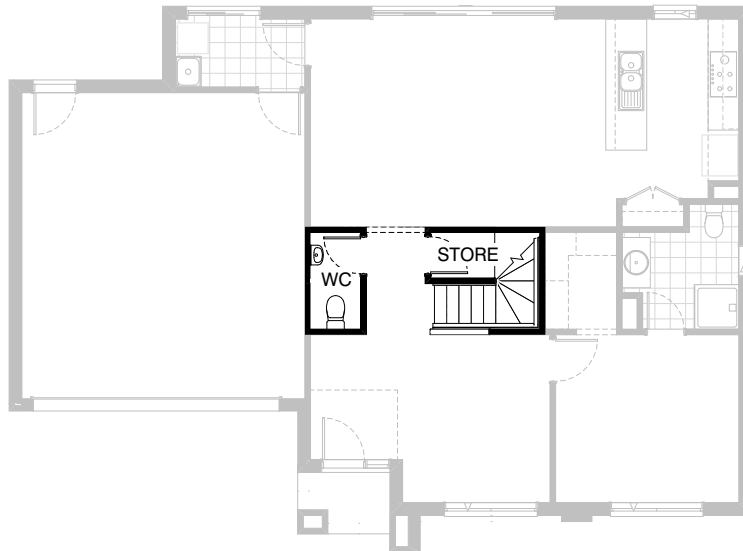


Option ENS-1 GF

Provide Ensuite Option with 1no. 1500mm x 900mm tiled shower base in lieu of standard, 1no. 1027mm x 610mm aluminium sliding window, 1no. 1282mm wide vanity unit with 2no. basins in lieu of standard and 1no. 720mm cavity sliding door to suit. Increase Pantry cupboard width by 90mm and decrease plumbing stack to suit.

FLOORPLAN OPTIONS

 **3**  **2.5**  **2**






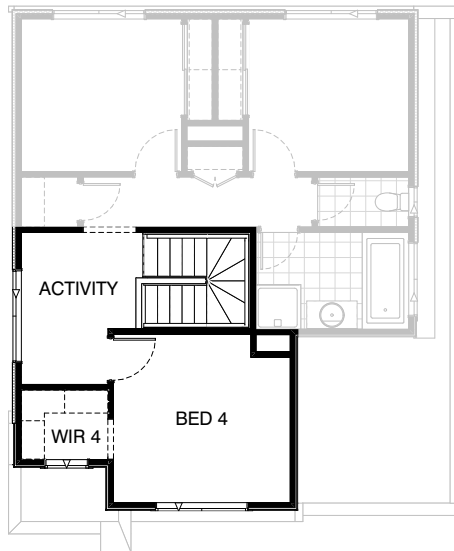
Option IP1-1 GF

Relocate WC and provide Store room below stair including 720mm flush panel hinged door, plaster lined walls and raked plaster ceiling on battens with square set cornice including additional light point.
Delete Linen cupboard.

NOTE: Flooring not included

FLOORPLAN OPTIONS


 **3**  **2.5**  **2**



Option IP1-2 FF

Provide Bed 4 option with W.I.R to first floor in lieu of Living / Void area. Suits Condor facade only

FLOORPLAN OPTIONS

 **3**  **2.5**  **2**



Option EP1-1

Provide Alfresco 3000mm x 4530mm to rear of Meals and Family with 2x470mm brick piers, structural concrete floor and tiled hipped roof. Increases size by 13.59m²

FLOORPLAN OPTIONS




 **3**  **2.5**  **2**

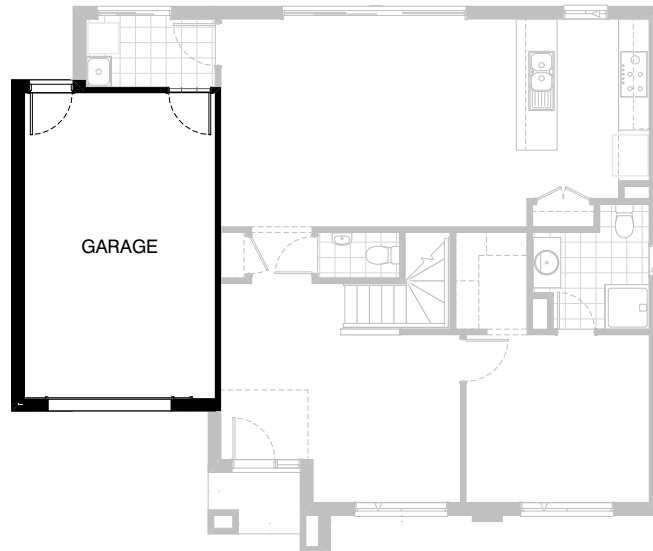


Option EP1-2

Provide Grand Alfresco 3000mm x 7290mm to rear of Meals, Family and Kitchen with 3no. 470mm brick piers, structural concrete floor and tiled hipped roof, relocate Bed 3 window to side elevation due to hipped roof

FLOORPLAN OPTIONS

 **3**  **2.5**  **2**



Option G-1

Provide single car Garage in lieu of double and provide 1no. 2100mm x 2400mm garage door in lieu of standard.
Decreases area by 11.65m².
Decrease width by 1800mm.